



# Citi Bike Phase 3 Expansion

Brooklyn Community Board 9 – Transportation Committee

June 1, 2022



---

# NYC Bike Share Overview

1

# What is Bike Share?

## Shared-Use Mobility

### Network of shared bicycles

- Intended for point-to-point transportation

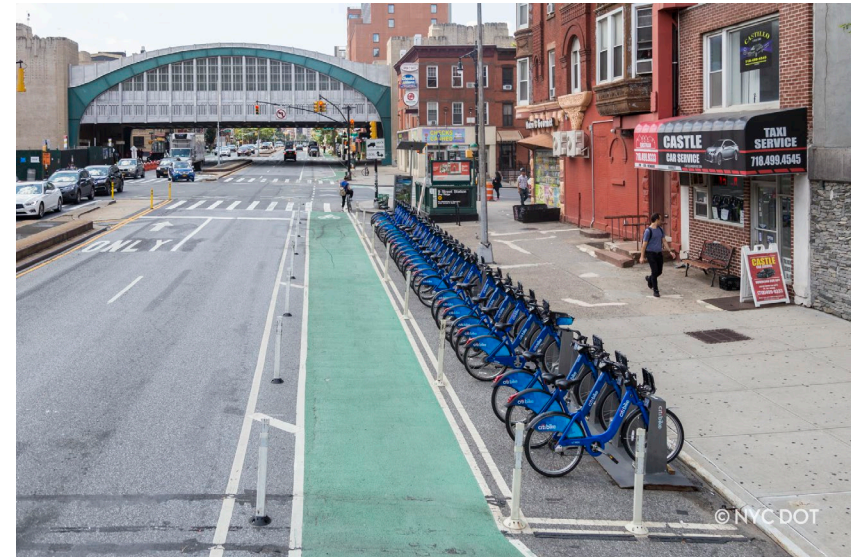
### Increased mobility

- Additional transportation option
- Convenient for trips that are too far to walk, but too short for the subway or a taxi
- Connections to transit

### Convenience

- System operates 24/7
- No need to worry about bike storage or maintenance

### Positive health & environmental impacts



# What is Citi Bike?

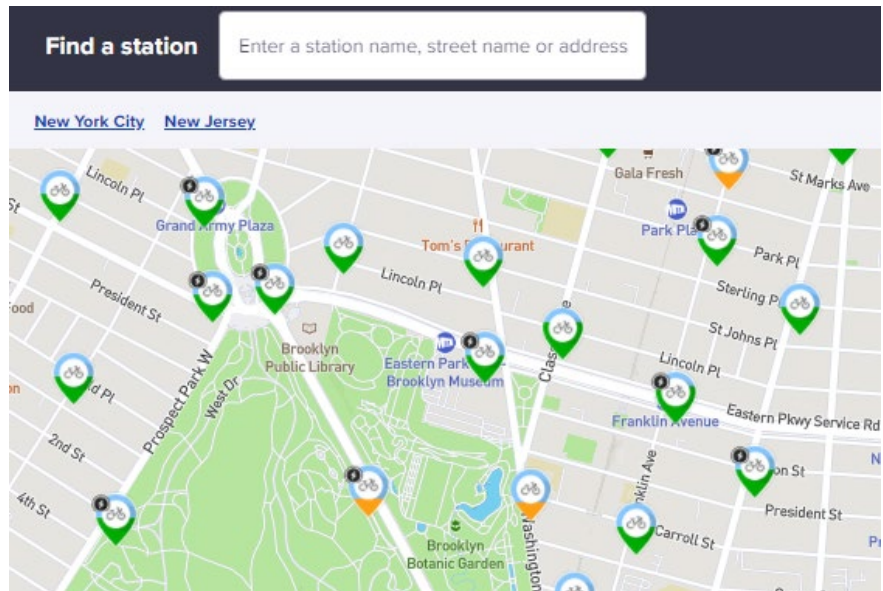
## New York City's Bike Share System

### Private – Public partnership

- NYC DOT responsible for system planning and outreach
- Lyft responsible for day-to-day operations and equipment
- Funded by sponsorships & memberships

### Citi Bike is a station-based bike share system. Stations:

- Can be on the roadbed or sidewalk
- Are not hardwired into the ground
- Are solar powered and wireless
- Provides reliability, consistency, and redundancy for riders



# Citi Bike to Date

## 8+ Years of Citi Bike

### Citi Bike Launch: Phase 1

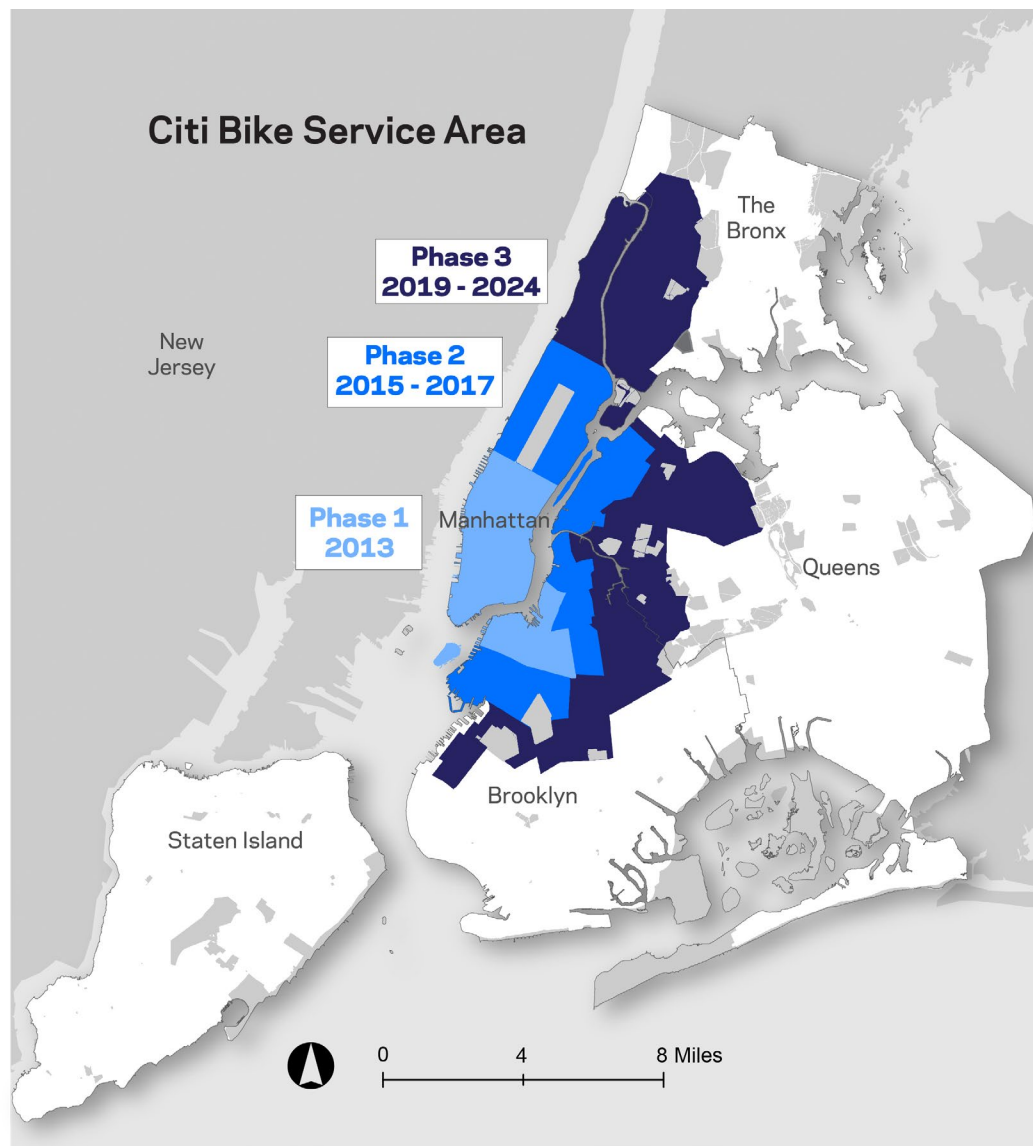
- 2013
- Manhattan & Brooklyn
- 330 stations
- 6,000 bikes

### Citi Bike Expansion: Phase 2

- 2015 – 2017
- Manhattan, Brooklyn, Queens
- 750 stations
- 12,000 bikes

### Citi Bike Expansion: Phase 3

- Manhattan, Brooklyn, Queens, Bronx
- 2019 – 2024
- + 35 square miles
- + 24,000 bikes



# High Ridership

## By the Numbers

**145+ million trips to date**

*27+ million trips in 2021*

**~5 trips per day per bike**

**~100,000 daily trips in peak riding months**

*120,000+ daily rides during busiest days*

**~160,000 annual members**

**1+ million unique riders in 2021**



# Pricing

## Memberships\*

**Single Ride**  
**\$3.99**

One 30 minute ride

Available via the Lyft  
smartphone app

**Day Pass**  
**\$15**

Includes unlimited 30  
minute rides in a 24 hour  
period

**Annual**  
**\$185/year**

Or \$15/month

Includes unlimited 45  
minute rides

## Reduced Fare Bike Share & Community Development Credit Union Rates

**NYCHA Residents & SNAP  
Recipients**  
**\$5/month**

No annual commitment

Includes unlimited 45 minute rides

**Community Development  
Credit Union Members**

**\$5/month**

With annual commitment

Includes unlimited 45 minute rides

\*Additional charges apply for ebikes and late fees

# Equity Efforts

Bike Share for Everyone

Reduced Fare Bike Share

Community Grants Program

Partner Keys & Free Ride Codes

Equity Advisory Board

**REDUCED FARE BIKE SHARE**

presented by



# Safe Cycling

## Safe Cycling Environment

### DOT promotes cycling safety with:

- Helmet giveaways
- Light and bell giveaways
- Safety awareness classes

### 2019 Green Wave plan

- Focuses on improving bicycle infrastructure in bike share expansion area
- Includes expanded education efforts

### All Citi Bike kiosks and bicycles have the Rules of the Road



---

## Expansion Planning Process

2

# Planning Process

---

1. Station Siting
2. Public Outreach
3. Draft Plan Creation
4. Final Steps & Installation

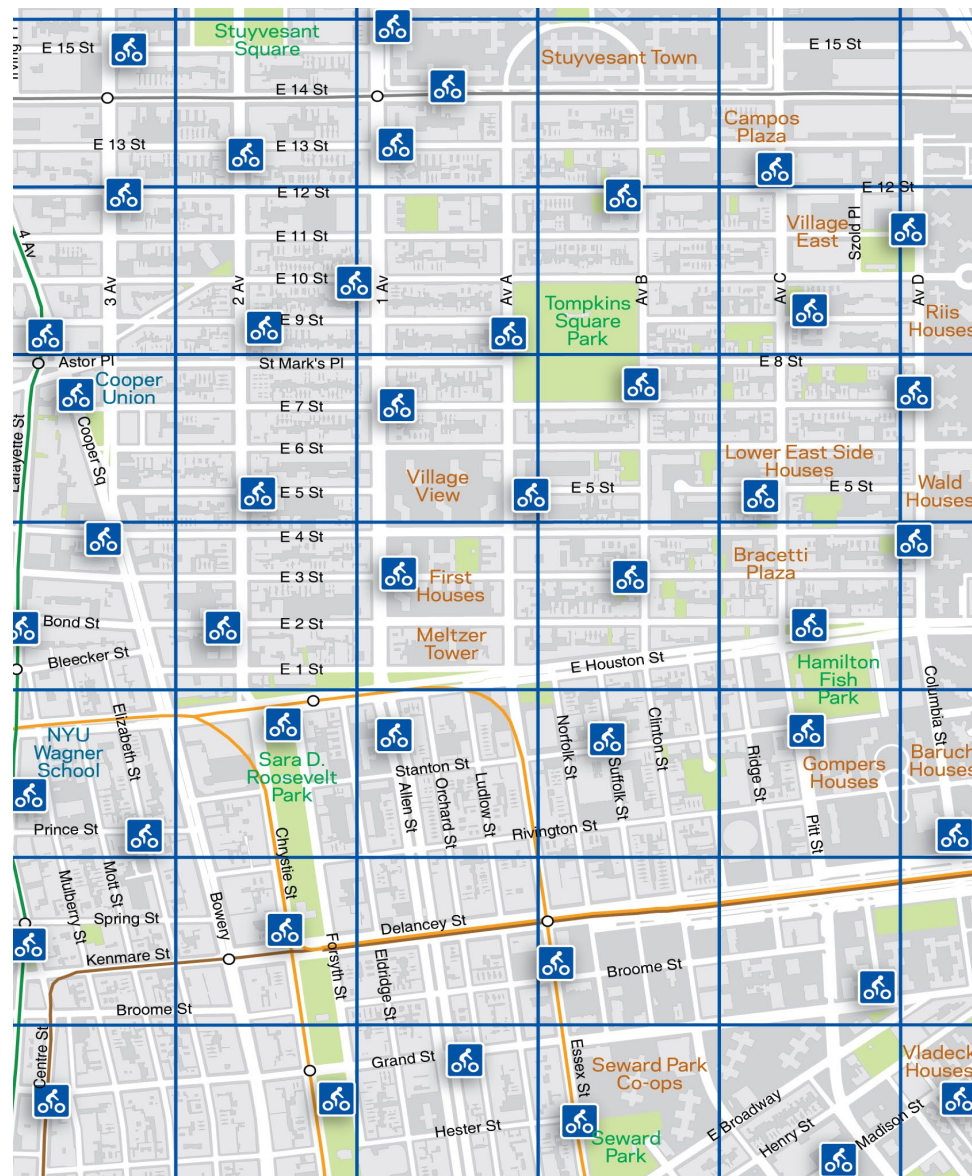


# 1. Station Siting

**Success based on high density of stations and equal access to stations across service area**

**Stations located every few blocks (approximately 3-5 minute walk)**

**Considerations for hydrants, utilities, accessibility, among other factors**



## 2. Public Outreach

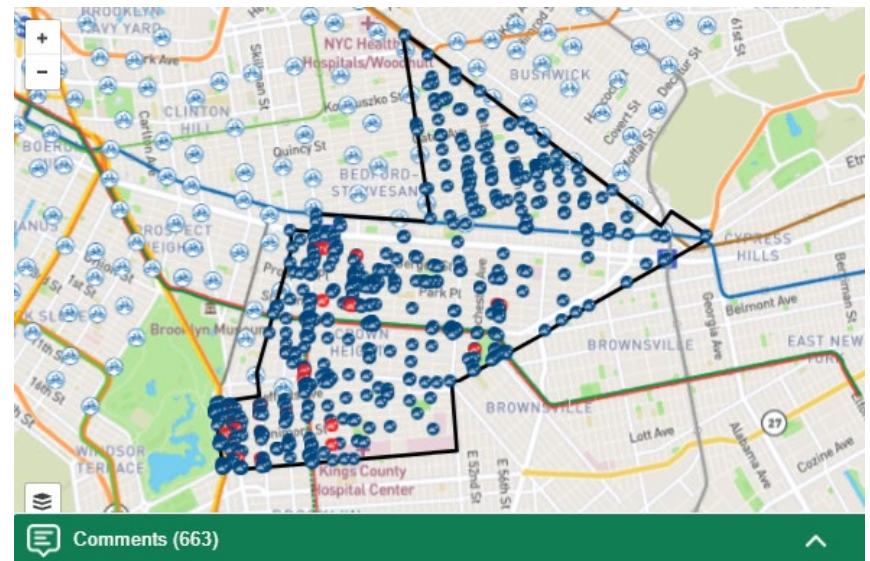
**In-person outreach with the DOT Street Ambassadors**

**Interactive station planning map & feedback portal**

- <https://nycdotprojects.info/CitiBikePhase3>

**Virtual stakeholder meetings**

**~775 total comments collected in Summer & Fall 2021 for the 2022 area**



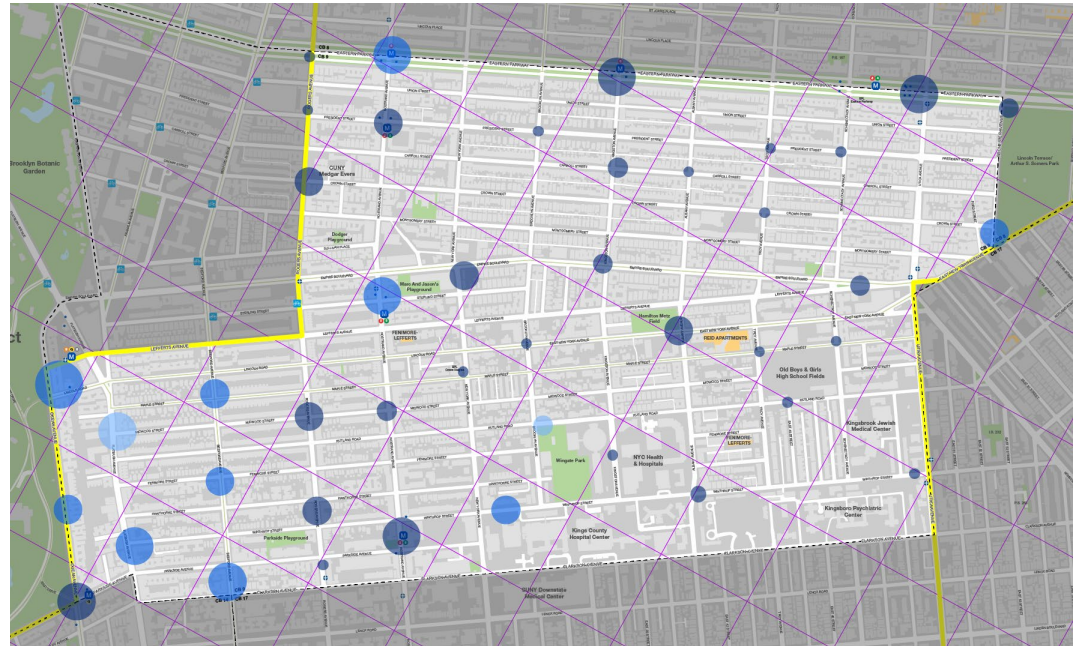
# 3. Draft Plan Creation

---

## Station locations determined by:

- Community feedback
- Siting principles & guidelines
- Lyft operational considerations

**Present draft plan of stations to Community Boards and post online**



# 4. Final Steps & Installation

---

## Gather feedback on the Draft Plan

1 month feedback period

## Technical screening & coordination

## Site specific outreach & notifications

## Install stations

## Continued outreach, monitoring, & adjustment



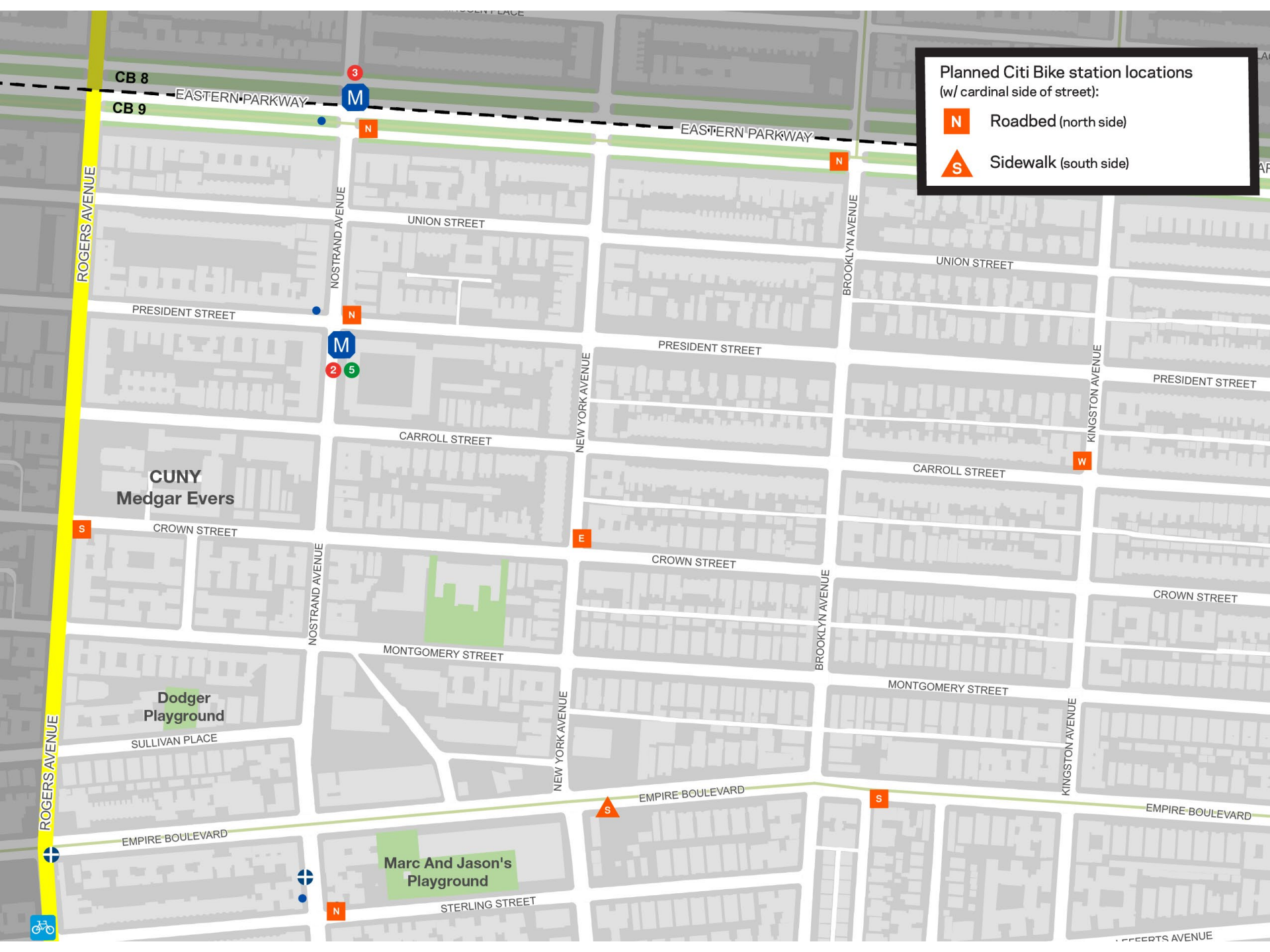
---

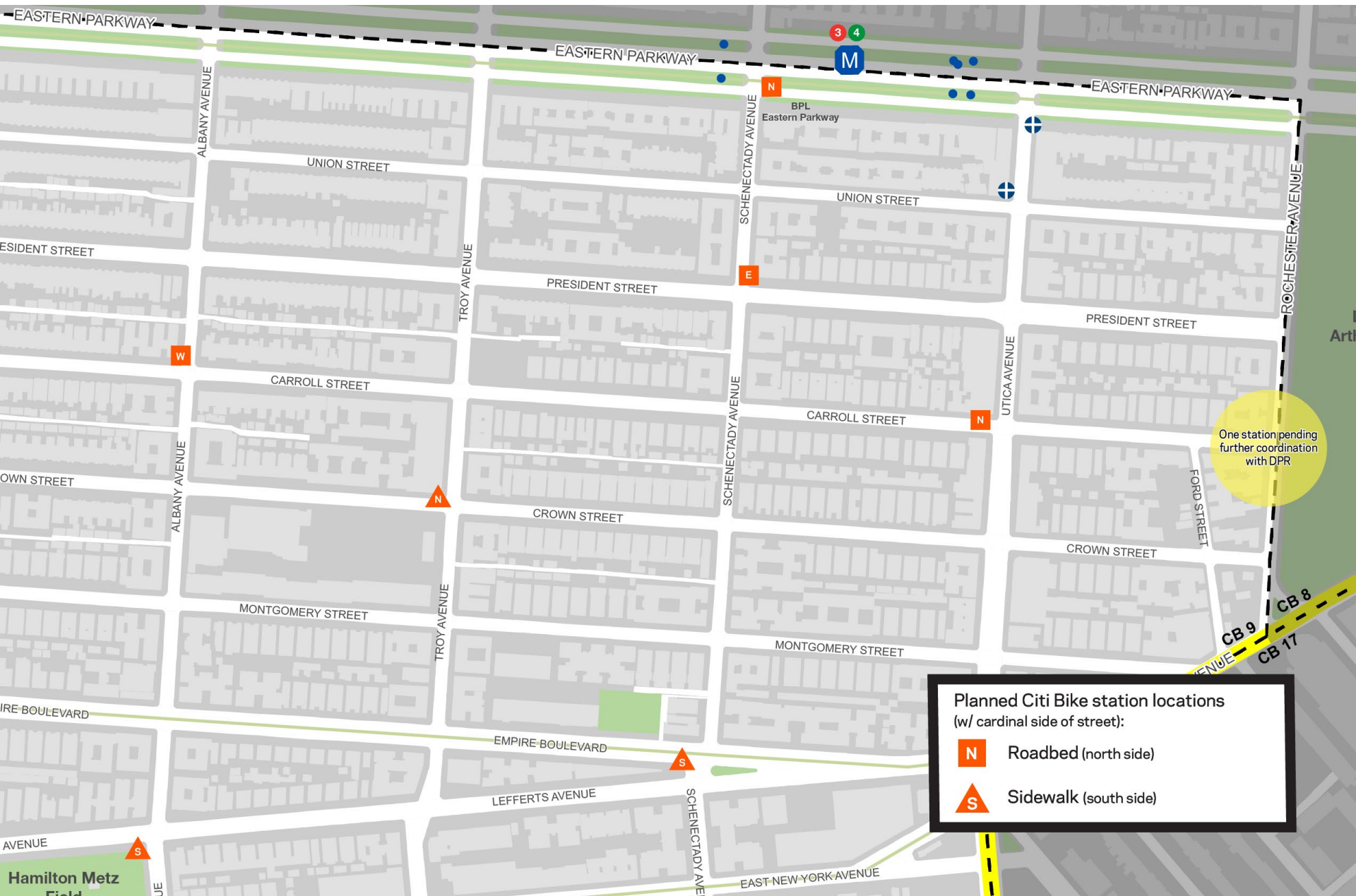
## Draft Plan Review

# 3

# Draft Plan Review









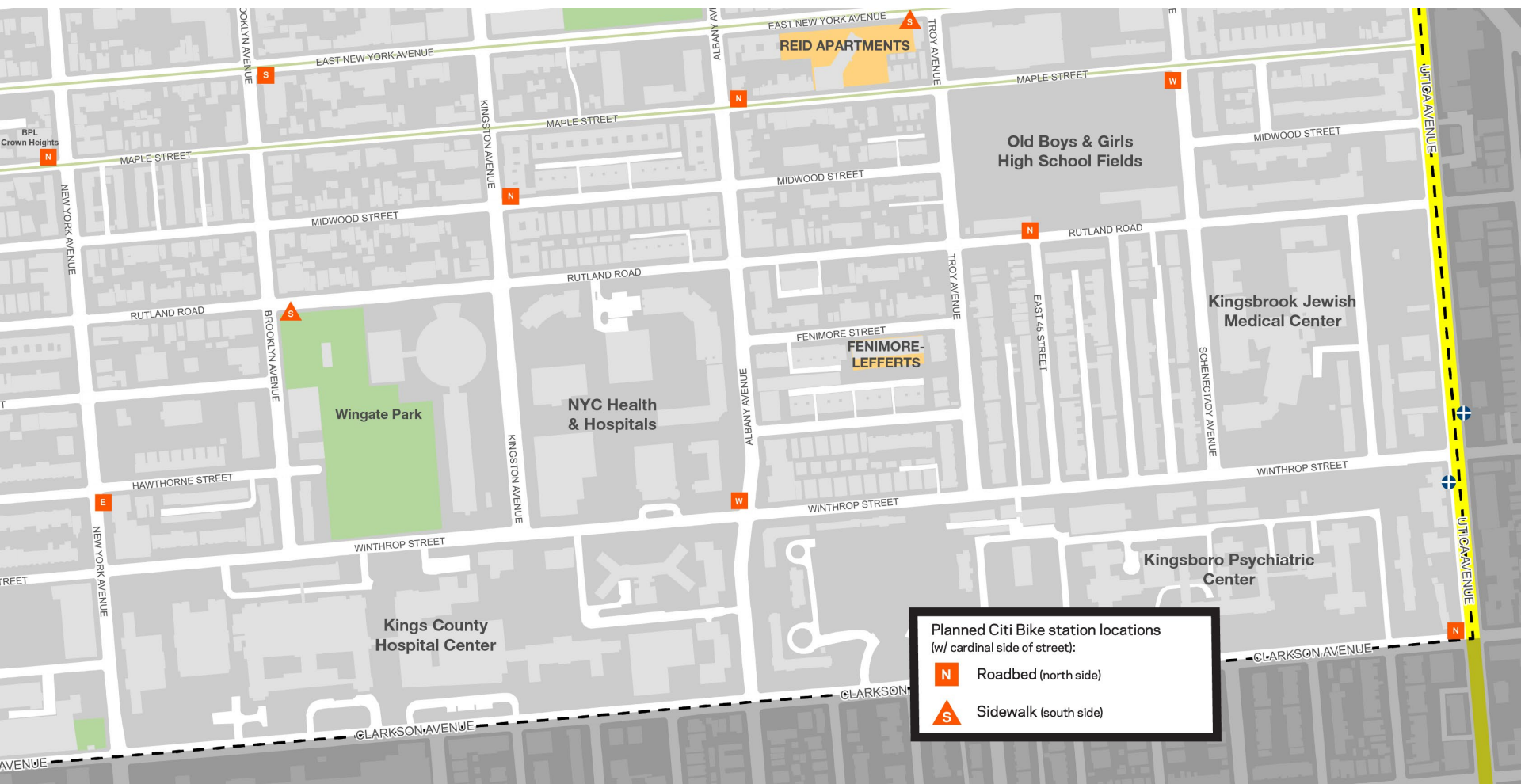
**Planned Citi Bike station locations**  
(w/ cardinal side of street):

- N** Roadbed (north side)
- E** Sidewalk (east side)

One station pending further coordination with DPR

Parkside Playground

CB 9  
CB 14  
CB 17



# Thank You!

---

## Questions?



NYCDOT



nyc\_dot



nyc\_dot



NYCDOT

Must stay clear of crosswalks



Must not be in bus stops



Must stay clear of hydrants

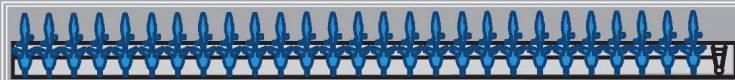


Should have good visibility

Road



Roadbed stations must not block travel lanes



Sidewalk stations require adequate width for pedestrian clearance



Sidewalk



Must not block driveways or curb cuts

Building



Must have 24/7 public access

May be on Parks Department property or City property at agency's discretion

May be on private property at the property owner's discretion

Station not to scale