



# Staten Island Dockless Bike Share: Beryl

Presentation to Community Board 1

October 13, 2020



---

## Bike Share Overview

# 1

# What is Bike Share?

## Shared-Use Mobility

### Network of shared bicycles

- Intended for point-to-point transportation

### Increased mobility

- Additional transportation option
- Convenient for trips that are too far to walk, but too short for the subway or a taxi
- Connections to transit

### Convenience

- Systems operates 24/7
- No need to worry about bike storage or maintenance

### Positive health & environmental impacts

**Citi Bike, the bike share system in Manhattan, the Bronx, Brooklyn, & Queens, is a *station-based* system.**





# Dockless Bike Share

A New Service Model

**No stations or docks**

**Find, unlock and lock bikes through smartphone apps**

**Park anywhere within service area  
(service area boundaries enforced  
via GPS and on-street monitoring)**



# 2018 - 2019 Pilots

## A New Service Model

### 3 Pilot Areas

### 4 Operators

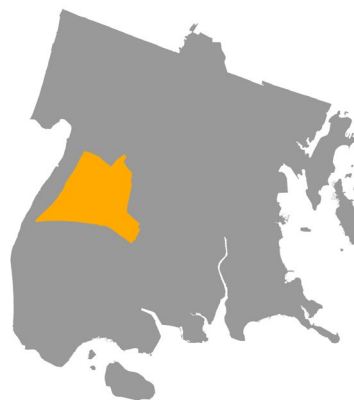
- Jump
- Lime
- Pace
- Citi Bike

### DOT Evaluated:

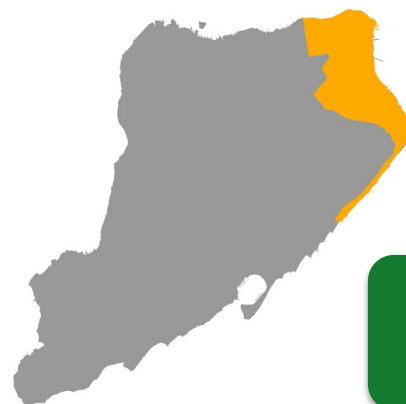
- Service and Business Models
- Usage
- Safety and Reliability
- Parking
- Operations and Maintenance



**Rockaways,  
Queens**



**Fordham,  
Bronx**



**North Shore,  
Staten Island**

Staten Island pilot had most rides of the three pilot areas: 111,600 rides taken during pilot

# 2021 Dockless Project

## Small pilots did not evaluate:

- Transportation function of dockless bike share
- Impact of dockless bike share at a larger scale

## Requests for continuation of dockless service from:

- Elected officials
- Stakeholders
- Community members

**Beryl chosen as new operator in after RFEI process in 2019**

**Original launch in spring 2020 delayed by COVID-19 pandemic**



---

Beryl

2



# What is Beryl?

**United Kingdom-based bike share operator and the new Staten Island dockless bike share operator**

**Currently operating in five cities with:**

- 2,500 vehicles (pedal bikes, pedal-assist bikes, cargo bikes, scooters)
- 430,000+ rides
- Over 1 million miles ridden
- 76,000 users

**Beryl responsible for operations & maintenance**

**NYC DOT responsible for planning, outreach, & oversight**





# Beryl Bikes

## Features

### Lights

- Front laser light projects 20' in front of bike (cyclists achieve 97% visibility in vehicle blind spots)
- Rear burner brake gets brighter as bike slows down, signals to other vehicles that bike is slowing down
- Front and rear turn on as soon as pedaling begins. Remains on for 2 mins when stopped

### Seat

- Adjust to comfortably fit riders 4'11" to 6'5"

### Frame

- Lightweight and step-through frame



# Pricing

## Minute Bundles – Best for regular use, buy upfront and save

Minutes	Price	Price per minute	Price for 20-minute trip
100	\$15	\$0.15	\$3
200	\$28	\$0.14	\$2.80
400	\$48	\$0.12	\$2.40
600	\$60	\$0.10	\$2

No fee to unlock a pedal bike, \$1.50 fee to unlock an e-bike

## Pay as You Ride

Best for single rides

Bike unlock fee: pedal bike - \$1; e-bike - \$1.50  
Price per minute : pedal bike - \$0.15; e-bike - \$0.25

Price for 20 minute trip: \$4

## Day Pass

Best for long days out

Price: \$12  
Unlimited rides for 24 hours

Price for 20 minute trip: \$12

Fees: Parking Outside a Bay: \$3, Parking Outside of Service Area: \$25  
Discount pricing will be available for qualifying low-income riders

# Beryl Bays

## Organizing Bike Parking

**Bays are designated parking areas, marked by paint on the sidewalk or roadbed**

**Can be found via smartphone app**

**Users will be charged a fee for parking outside of a bay and outside of the service area**





# Planning Principles

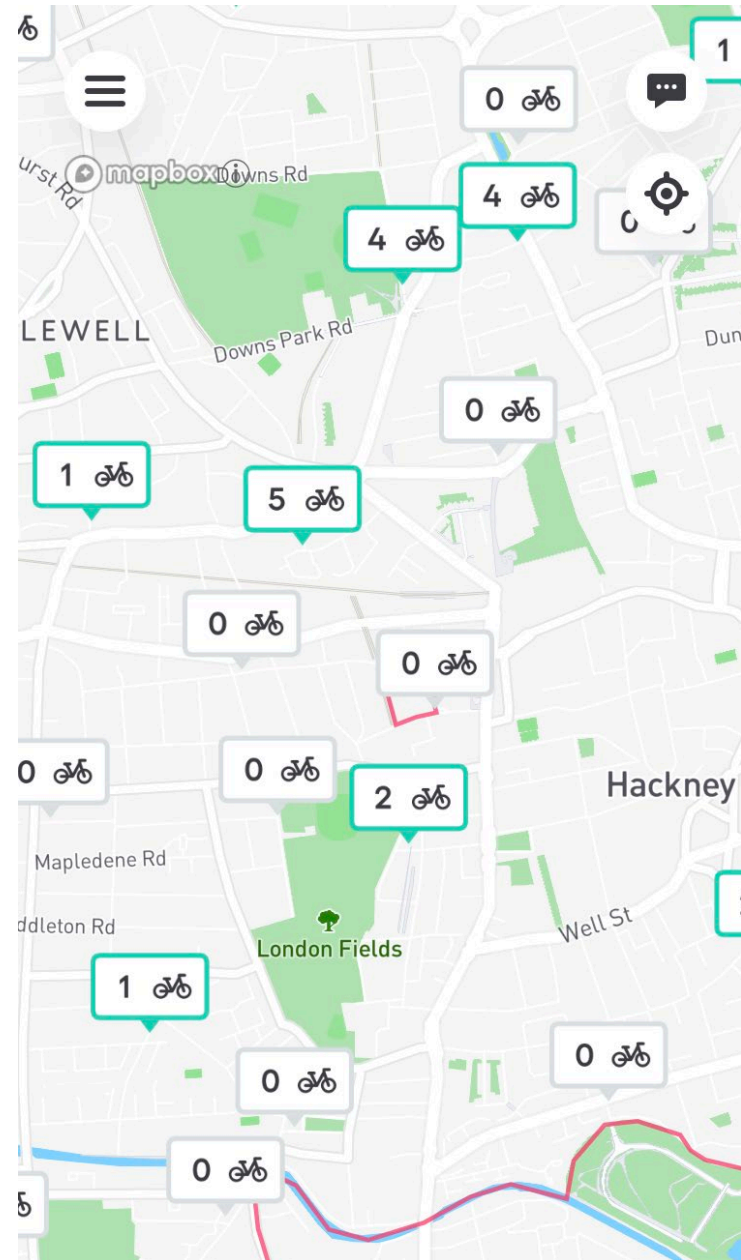
## Bay Placement

**Bike share success based on high density of stations and equal access to bays across service area**

**Bays located every few blocks**

**Bay locations determined by:**

- Sidewalk width & accessibility
- Adjacent land uses
- Proximity to street furniture
- Community input



# COVID-19 Response

## Safety Protocols

**Bikes regularly disinfected by field staff**

**Staff practice social distancing in the field and in repair facilities**

**In-app notifications to remind users to wash their hands**

**Updated protocols and reminders on website**

**Continue to follow latest local public health advice and requirements**



---

## Launch Plan & Bay Locations

3



# Scope & Timeline

Larger service area and more bikes

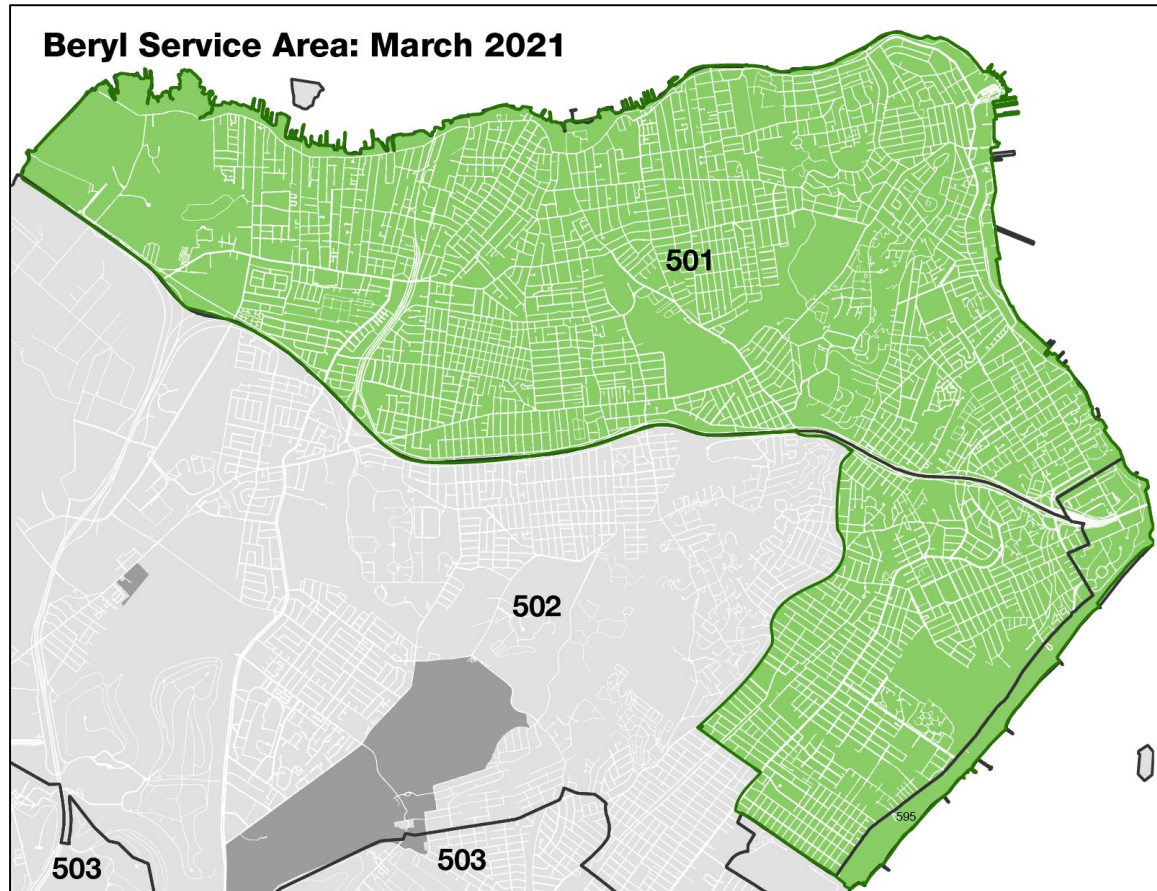
## 128 Beryl Bays in Community Board 1

- 61 on sidewalk
- 67 on roadbed

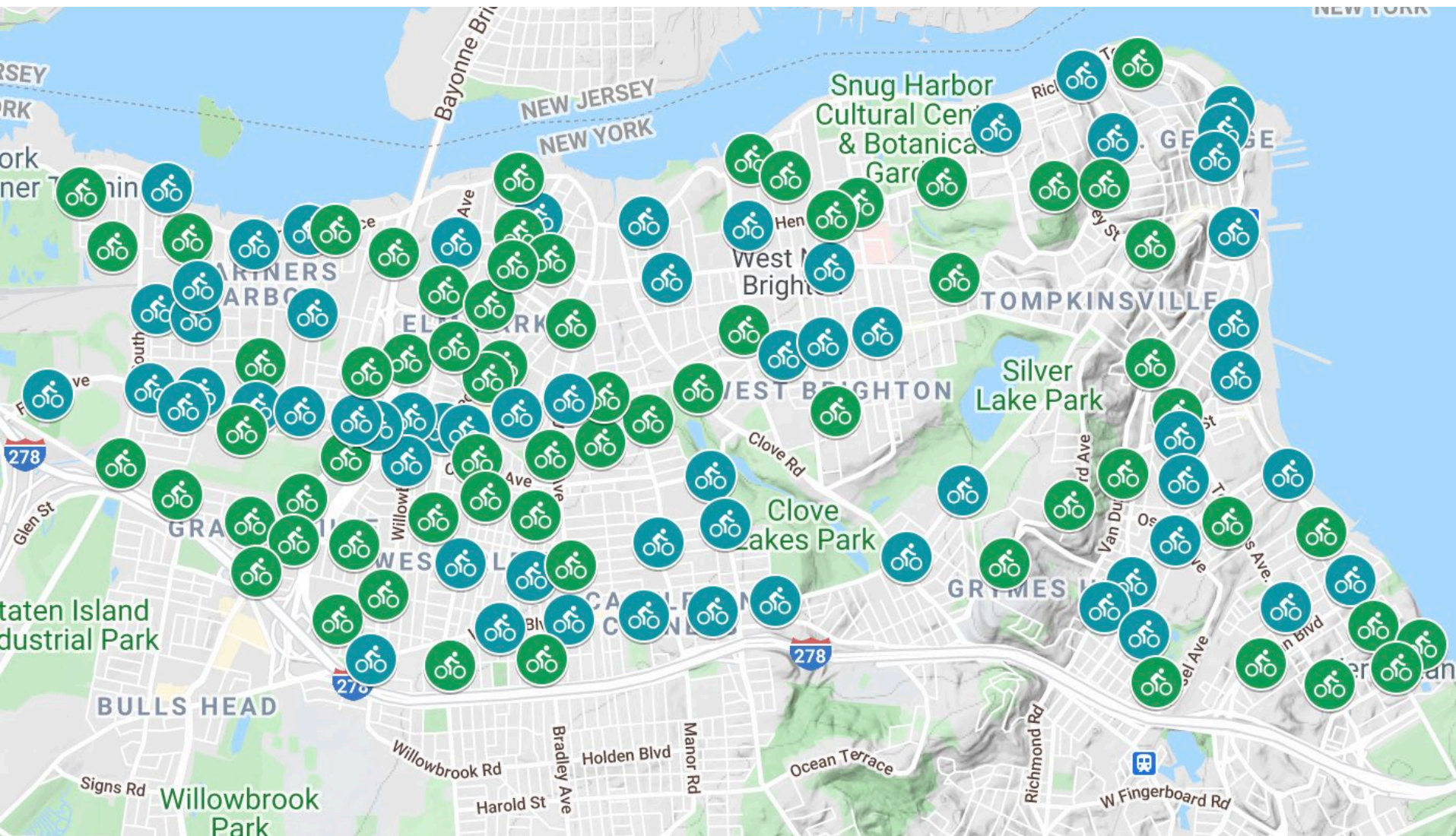
**350 Beryl bikes (mix of pedal bikes and pedal-assist electric bikes)**

**Begin bay installations in late fall 2020, complete in early 2021**

**Launch program in March 2021**

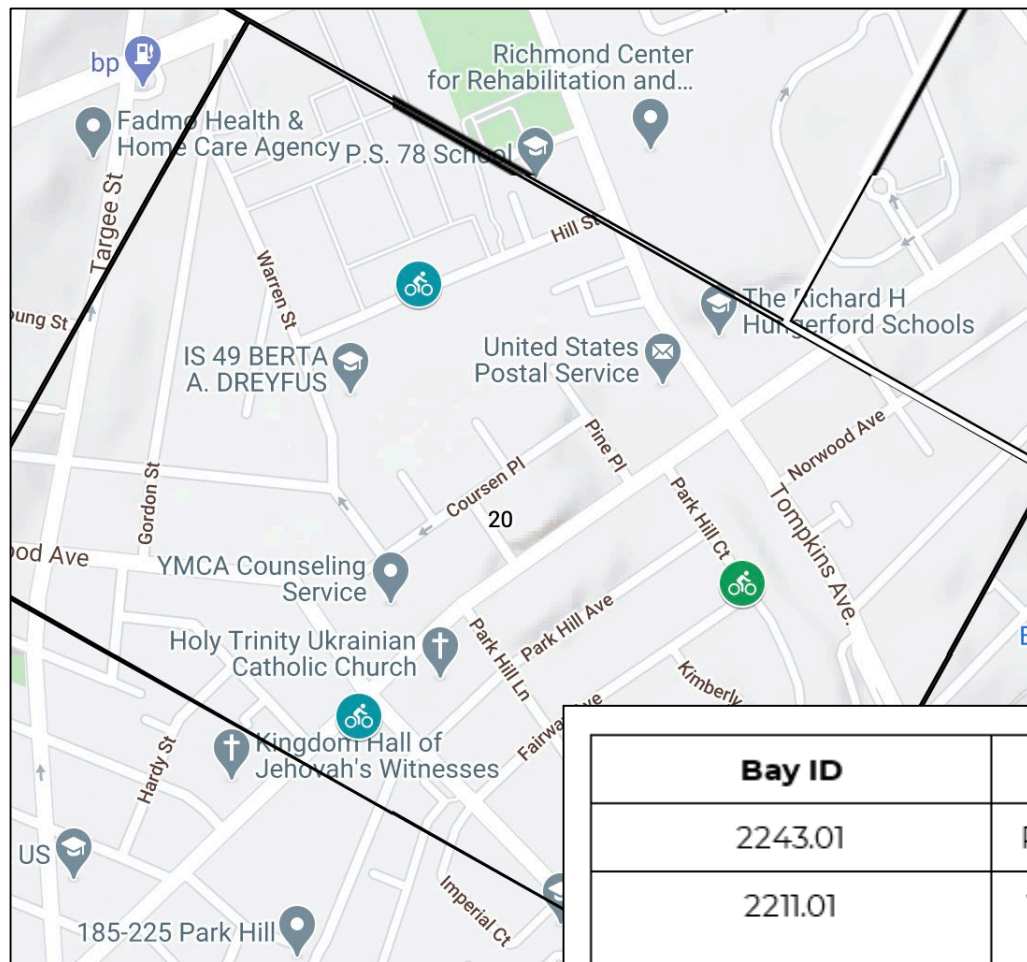


# Community Board 1





# Community Board 1: Sample Bay Details



Bay ID	Intersections	Installation Type
2243.01	Park Hill Ct/Fairway Av	Roadbed
2211.01	Vanderbilt Av/Osgood Av	Sidewalk
2323.01	Hill St/Warren St	Sidewalk



# Community Board 1: Sample Bay Details



**Sidewalk Bay**

**Roadbed Bay**



---

## Next Steps

# 4

# Next Steps

---

**Additional feedback for bay plan and adjustments, if possible**

**Virtual stakeholder meetings**

**Site specific outreach and notifications**

**Install bays and program launch**

**Continued outreach, monitoring, and adjustments**

**Plan for Beryl expansion in Community Board 2 & 3**





# Thank You!

---

## Questions?



NYCDOT



nyc\_dot



nyc\_dot



NYCDOT

