



Dockless Bike Share 2018 Pilot

Brooklyn Community Board 13

June 27, 2018

© NYC DOT



2018 Dockless Bike Share Pilot

Presentation Overview

- What is Bike Share?
- Five-Borough Bike Share
- Summer 2018 Pilot
- Community Feedback
- Questions

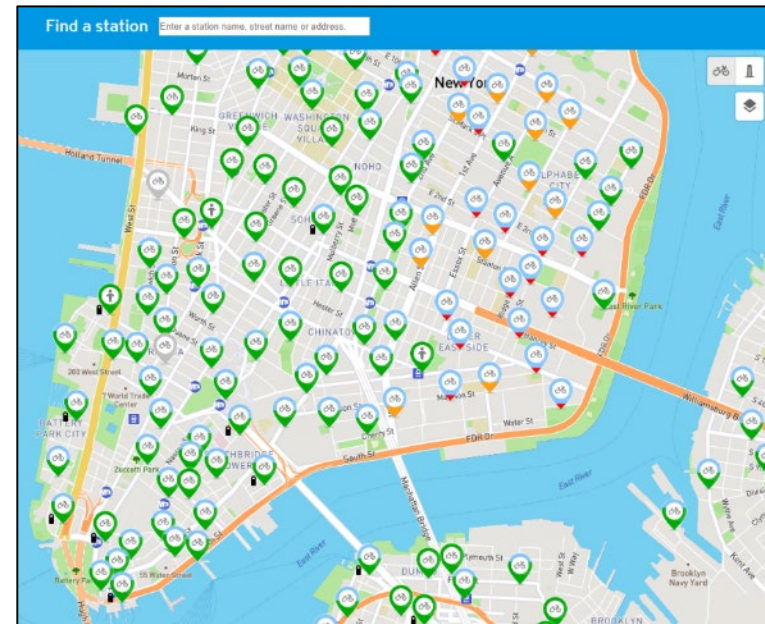
What is Bike Share?

1

What is Bike Share

Shared-use mobility

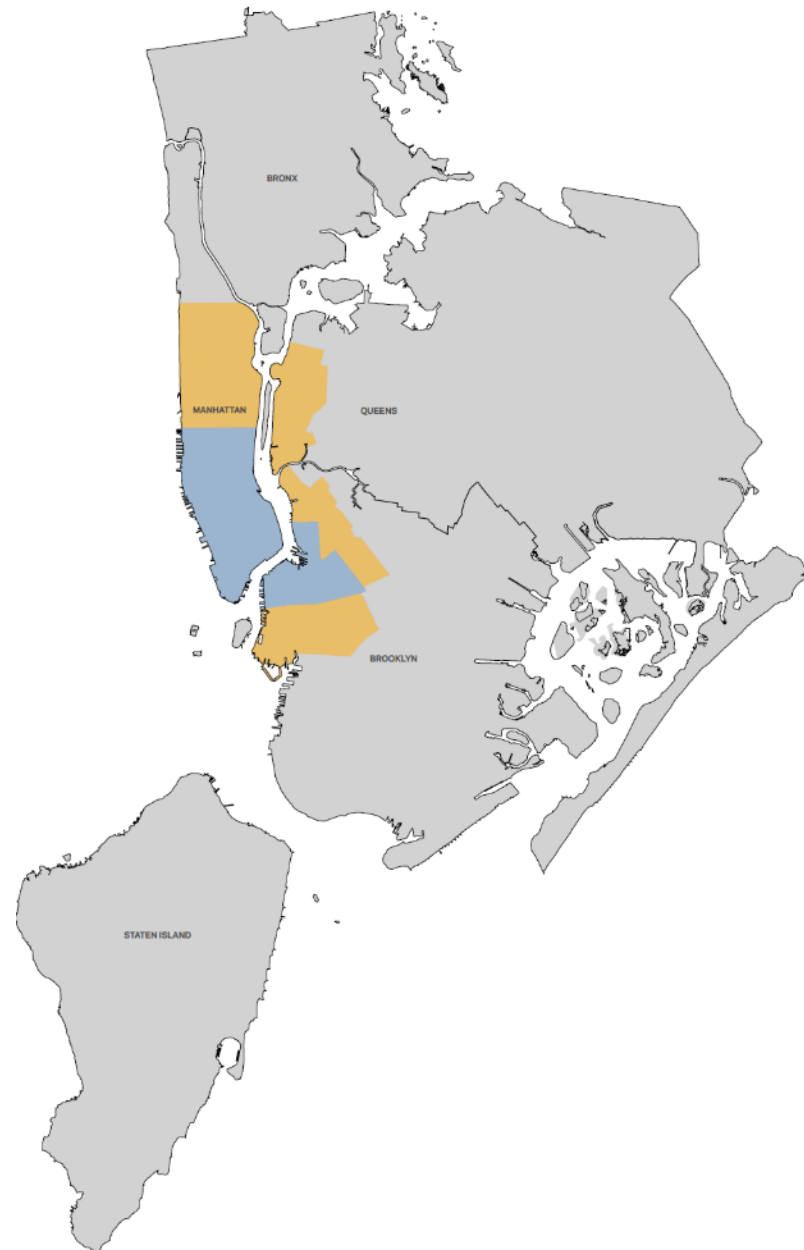
- **Network of shared bicycles**
 - Intended for point-to-point transportation
- **Increased mobility**
 - Convenient for trips that are too far to walk, but too short for a taxi or the subway
- **Always available**
 - System operates 24/7
- **Payments vary**
 - Pay-per-ride or memberships available



Bike Share in NYC Today

Citi Bike

- **Public-private partnership**
- **12,000 bikes at 750 stations**
- **Users purchase annual or short-term memberships**
- **No City funds used**



What is Dockless Bike Share

New service model

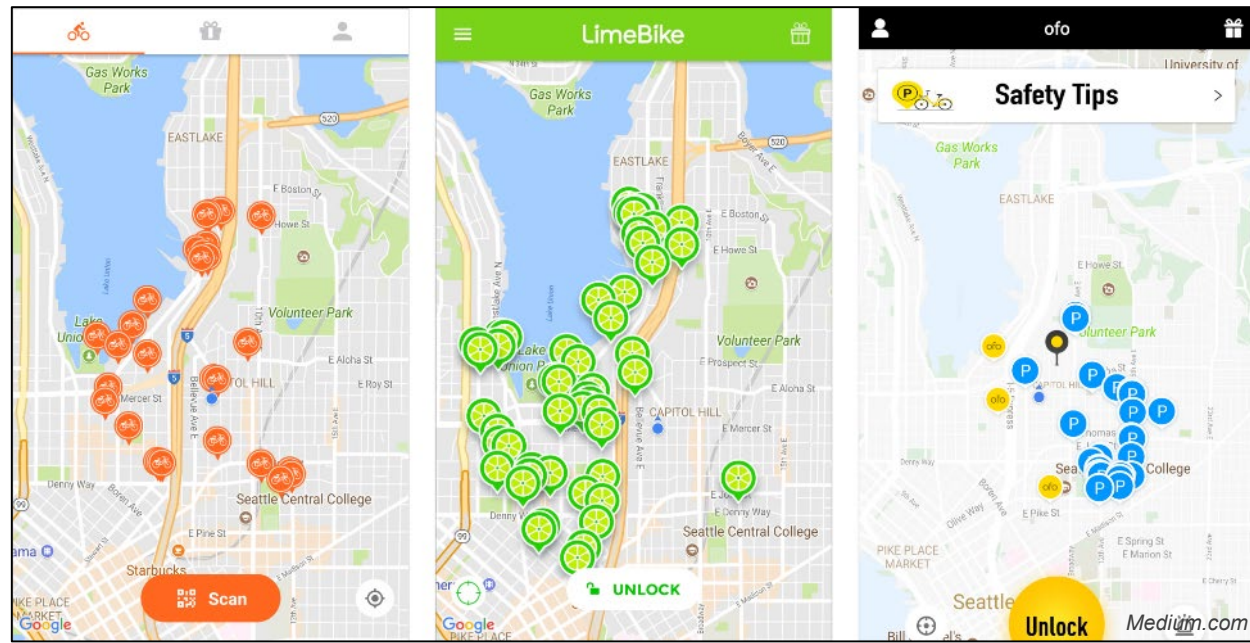
- **Model details**
 - No stations
 - Parking on sidewalk
 - Geofencing with GPS-enabled bikes
 - Primarily smartphone based
- **Two types**
 - Free-locking
 - Lock-to
- **Potentially lower capital costs**



How does it work?

Smartphone app based

- Search



How does it work?

Smartphone app based

- Search
- Scan



How does it work?

Smartphone app based

- Search
- Scan
- Unlock



How does it work?

Smartphone app based

- Search
- Scan
- Unlock
- Ride



How does it work?

General Parking Guidelines

- Search
- Scan
- Unlock
- Ride
- Park/Lock

1

On the sidewalk in line with street furniture

2

Leave clear path for pedestrian access

3

Kickstand must be down or locked to bike rack



Five-Borough Bike Share

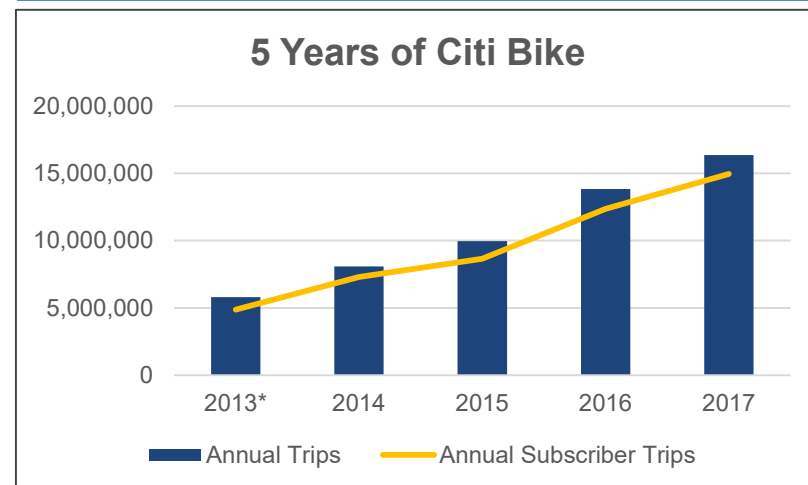
2

Five-Borough Bike Share

Promote and expand bike share

- **5 years of Citi Bike**
 - Launched May 2013
- **High usage in service area**
 - Widely adopted within network
- **Evaluate dockless model**
 - Potentially lower capital cost
 - Opportunity to bring bike share quicker to more neighborhoods
 - Summer pilots will help test if this model works for NYC

16.3 million Citi Bike trips in 2017



Safety in Numbers

Increasing cycling trips

- **2017 Safer Cycling Report**
 - More cyclists = safer riding for all cyclists
 - Cyclist killed and severely injured (KSI) declined in Citi Bike zone



Figure 9. Average Cyclist Fatalities per Million Trips

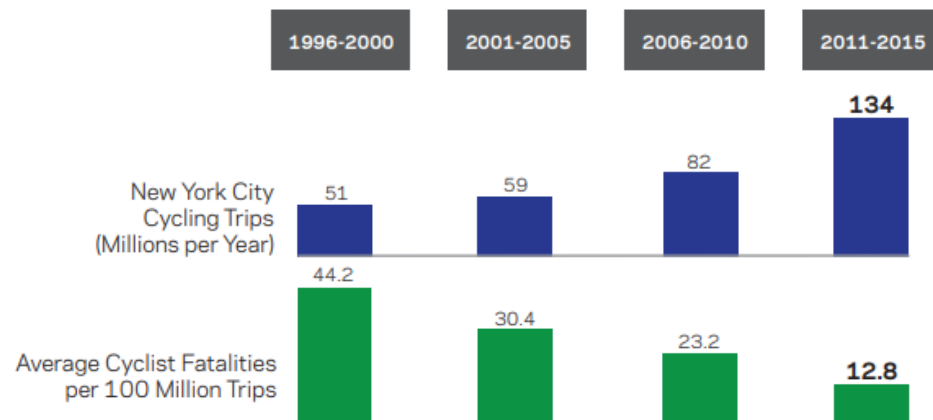


Figure 12. Cyclist KSI Before & After Bike Share Launch

Zone	Average Cyclist KSI Before (2010 - 2012)	Cyclist KSI After (2014)	Percent Change
Inside Bike Share Zone	165	137	-17%
Outside Bike Share Zone	233	224	-4%
Total	398	361	-9%

Safe Cycling

Promoting a safe cycling environment

- **DOT Promotes cycling safety with:**
 - Helmet fittings
 - Light and bell giveaways
 - Safety awareness classes
 - Commercial cyclist workshops



Summer 2018 Pilots

3

Summer 2018 Pilots

RFEI Respondents

- **Pilot Program Respondents**

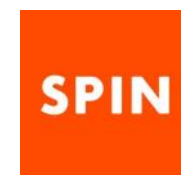
- JUMP
- Lennybike
- LimeBike
- MetroBike
- Mobike
- Motivate
- ofo
- pace
- P3GM
- Quimo
- Riide
- Spin



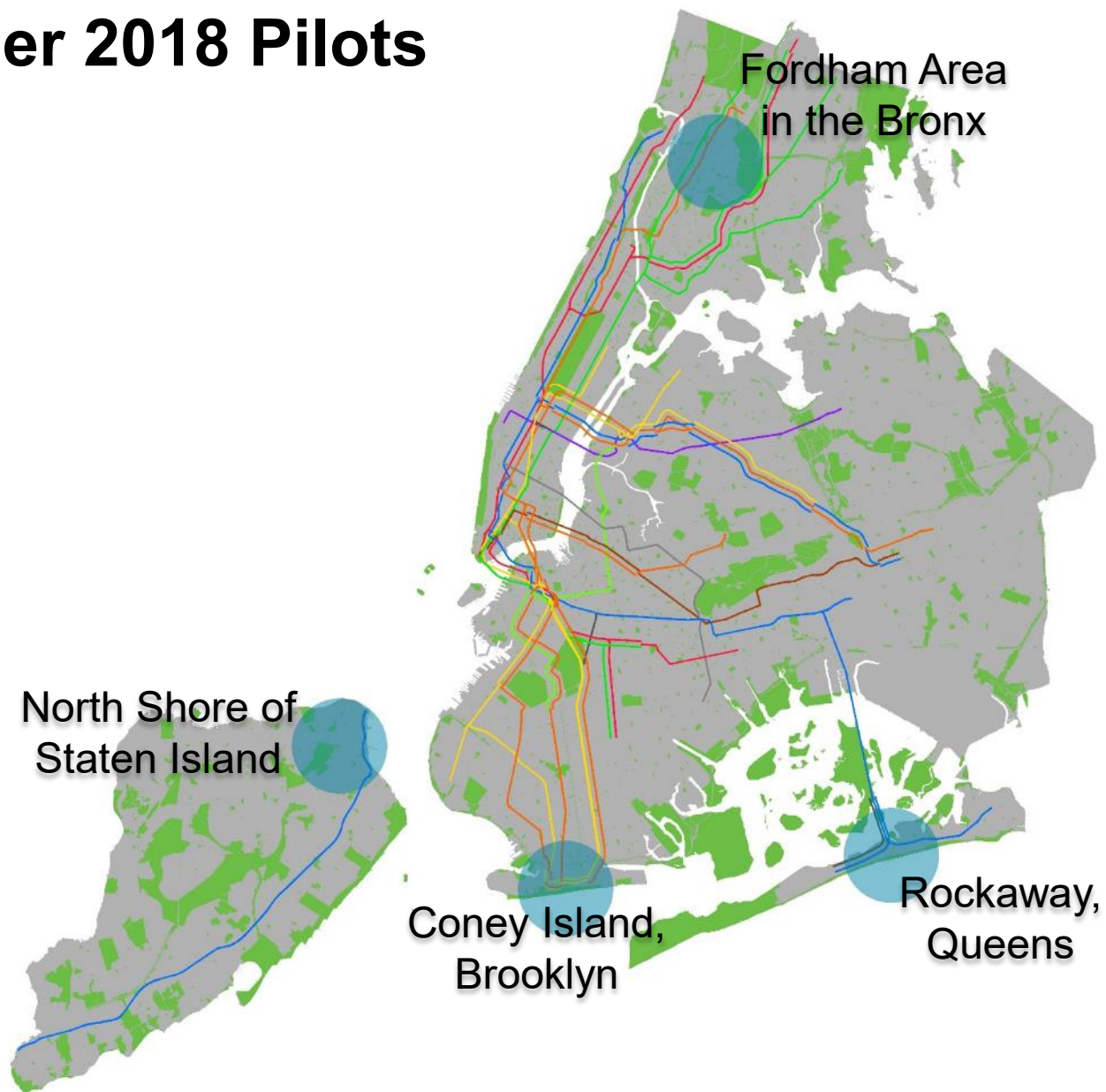
QuimoCycle



LimeBike



Summer 2018 Pilots



Summer 2018 Pilots

Small scale, short term

- **Goals**
 - **Test different models**
 - Free-locking bikes
 - Bikes that lock to bike racks
 - Pedal bikes
 - Pedal-assist bikes
 - **Apply lessons learned and community feedback for future pilots**









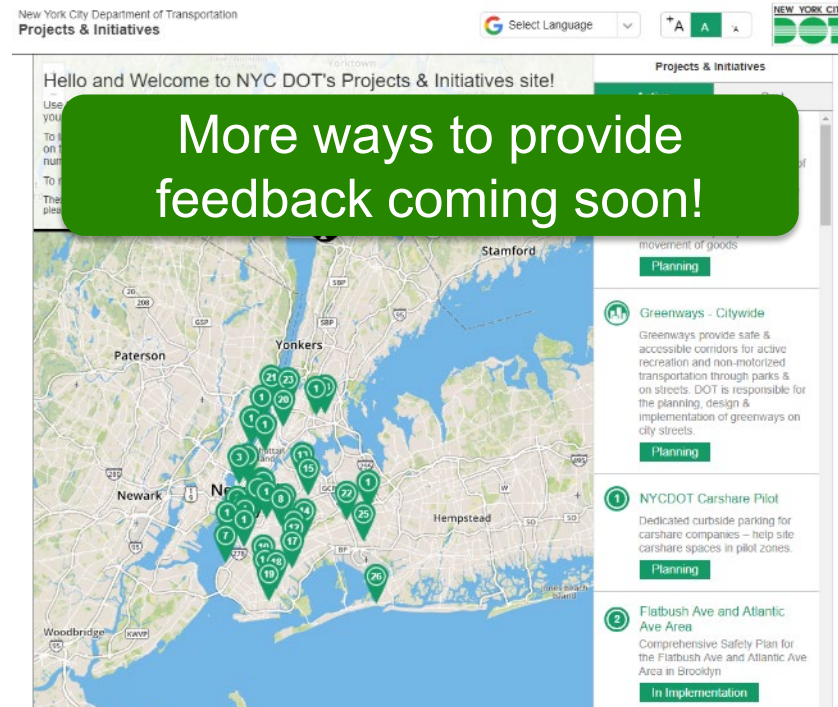
Community Feedback

4

Public Participation

Everyone has a voice

- **Contact the pilot operator**
 - All bikes will have easy-to-find customer service numbers
- **Contact 311**
 - Report any issues and get general information
- **Contact DOT**
 - Staten Island Boro Commissioner's Office
 - 212-839-2400



Thank You!

Questions?



NYCDOT



nyc_dot



nyc_dot



NYCDOT