

Citi Bike Expansion: Draft Plan



What is Citi Bike?

E 43 St & Vanderbilt Av
Grand Central Terminal
citi bike

How to
make 42nd St.
even more
entertaining.

citi bike

Unlock it below.
Unlock New York.
citi bike

- Citi Bike is New York City's bike share system
- A network of bicycle rental stations intended for point-to-point transportation
- Convenient for trips that are too far to walk, but too short for a taxi or the subway
- System operates 24/7
- Public-private partnership
- No city funds used

citi bike

04035

Strong Safety Record

- Only one reported crash for every 160k trips
- A 2014 CUNY Hunter study identified Citi Bike riders exhibited safer riding behavior than other cyclists
- A 2016 Report from Mineta Transportation Institution found that Bike Share riders have lower rates of crashes than other cyclists

Ceda el paso a
los peatones

No use las aceras

Deténgase en las
luces rojas

Circule en el sentido
del tráfico

In NYC, cyclists must:

Yield to pedestrians
Stay off the sidewalk
Obey traffic lights
Ride with traffic



Helmets are encouraged.
Get yours at a nearby bike shop.
See map for locations.

More information



1-855-BIKE-311 (1-855-245-3311)
www.citibikenyc.com

The Bike



Safe Cycling Promotion

DOT promotes cycling safety with:

- Helmet fittings
- Light and bell giveaways
- Safety awareness classes
- Commercial cyclist workshops



Safe Cycling Promotion



Citi Bike/Motivate promotes cycling safety with:

- Safety ambassadors
- Free Street Skills classes

Citi Bike Today

Growing to 12,000 bikes and approximately 750 stations by end of 2017

Improved bicycle rebalancing, cleaning and maintenance

Interoperable with regional Jersey City system

Annual membership price
\$14.95/month with annual contract
or \$163

NYCHA & CDC memberships
\$5/month with annual contract



Phase 2 Expansion

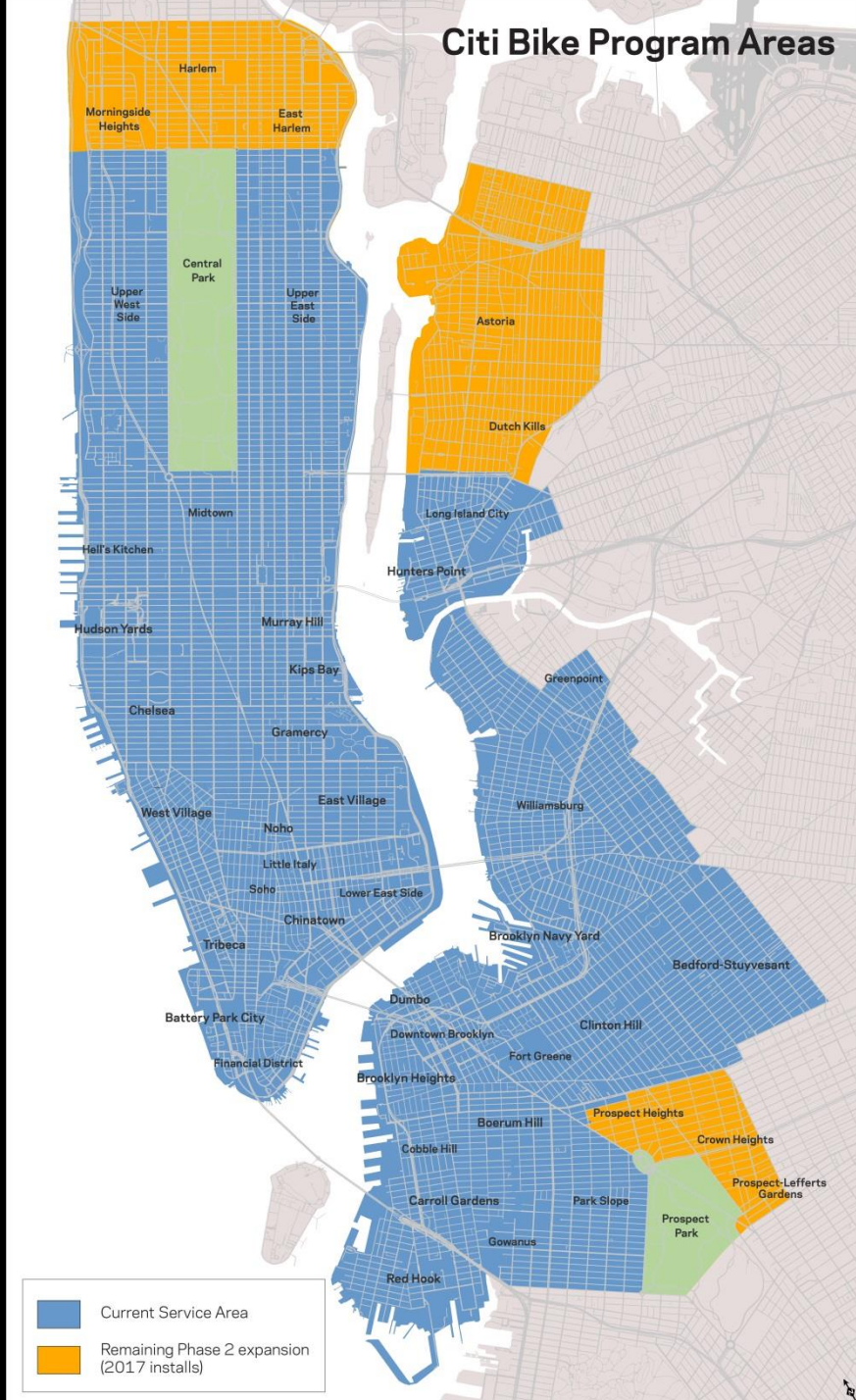
Currently, the system has:

- 10,000 bicycles
- 610 stations

By end of 2017, total size of Citi Bike system will be:

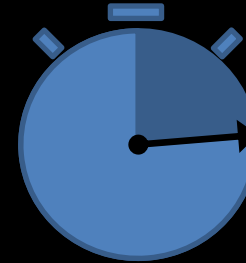
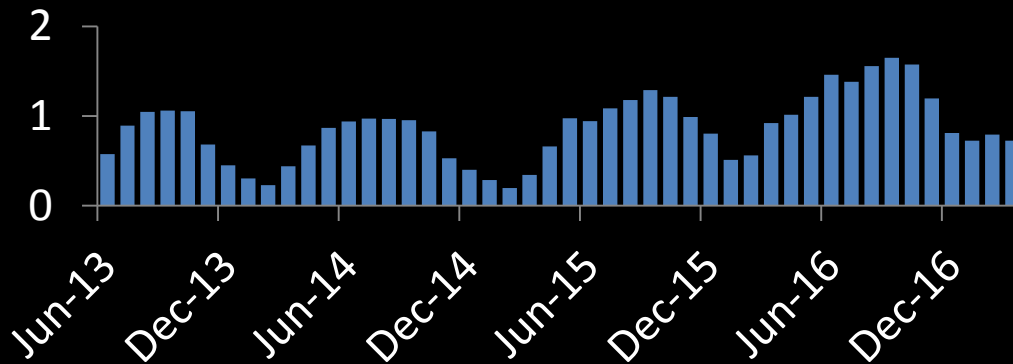
- 12,000 bikes
- 750 stations

Phase 2 sets stage for future expansion in any direction



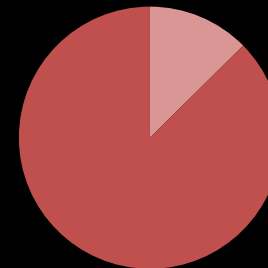
High Ridership

**Trips Per Month
(Millions)**



**Average trip
duration is
under 15
minutes**

40,000,000 +	Total trips
1,990,000 +	Memberships sold
122,000 +	Active annual members
69,000 +	Trips on busiest days
7.0 +	Trips per bike on busiest days



**88% of trips
are taken by
annual
members**

Planning and Outreach

- Extensive participatory planning and outreach campaign conducted to select station locations in CB8
- In this area, outreach campaign has included:
 - More than 13 meetings and events with CB8, elected officials, area institutions, BIDs, and other community organizations
 - Public community planning workshops in October and December 2016

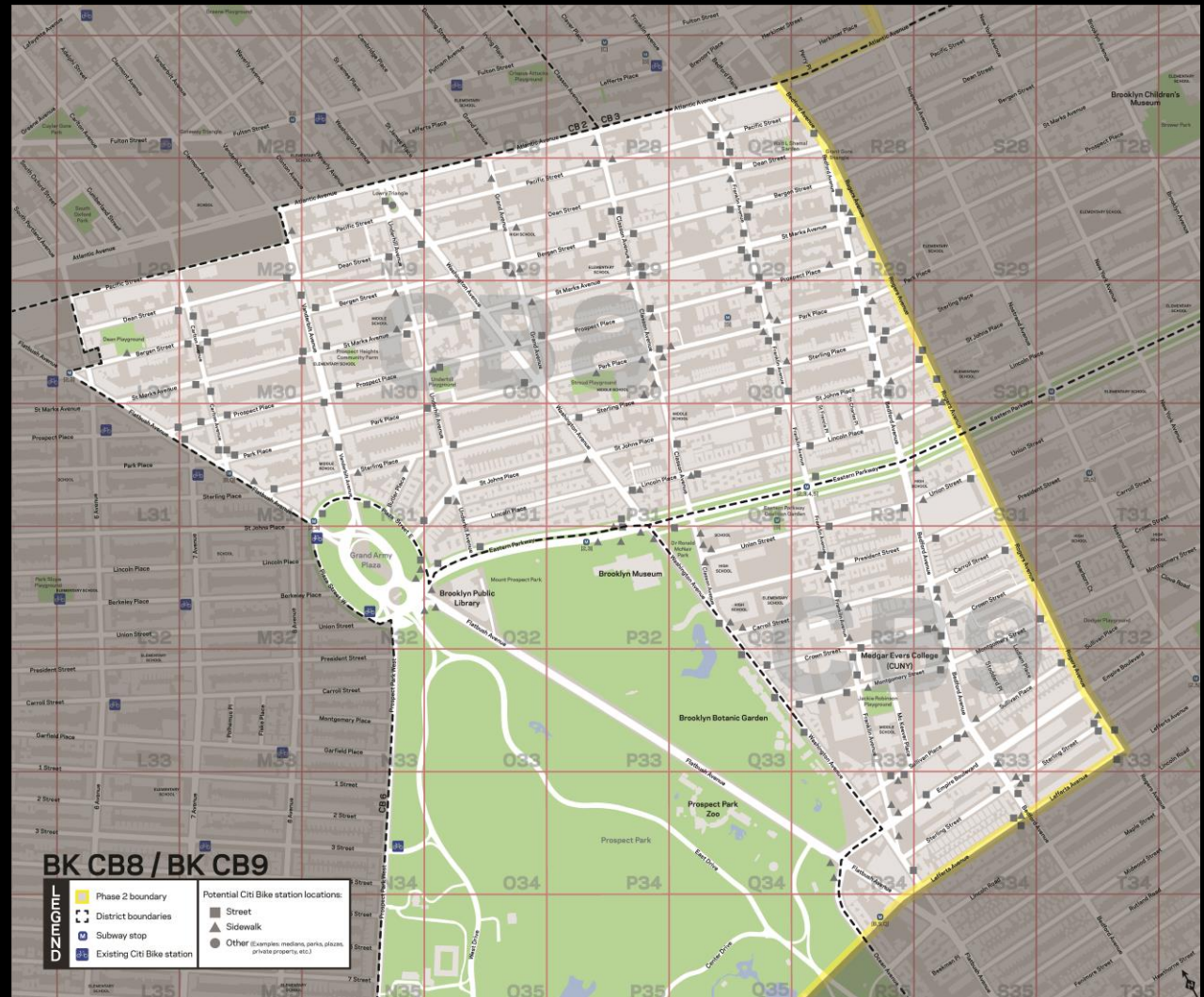


Creating a Plan

Map presented at
community planning
workshops in October
and December 2016

175 potential sites
shown

Participants asked to use
red and green stickers
and comment forms to
indicate opinion on
specific sites



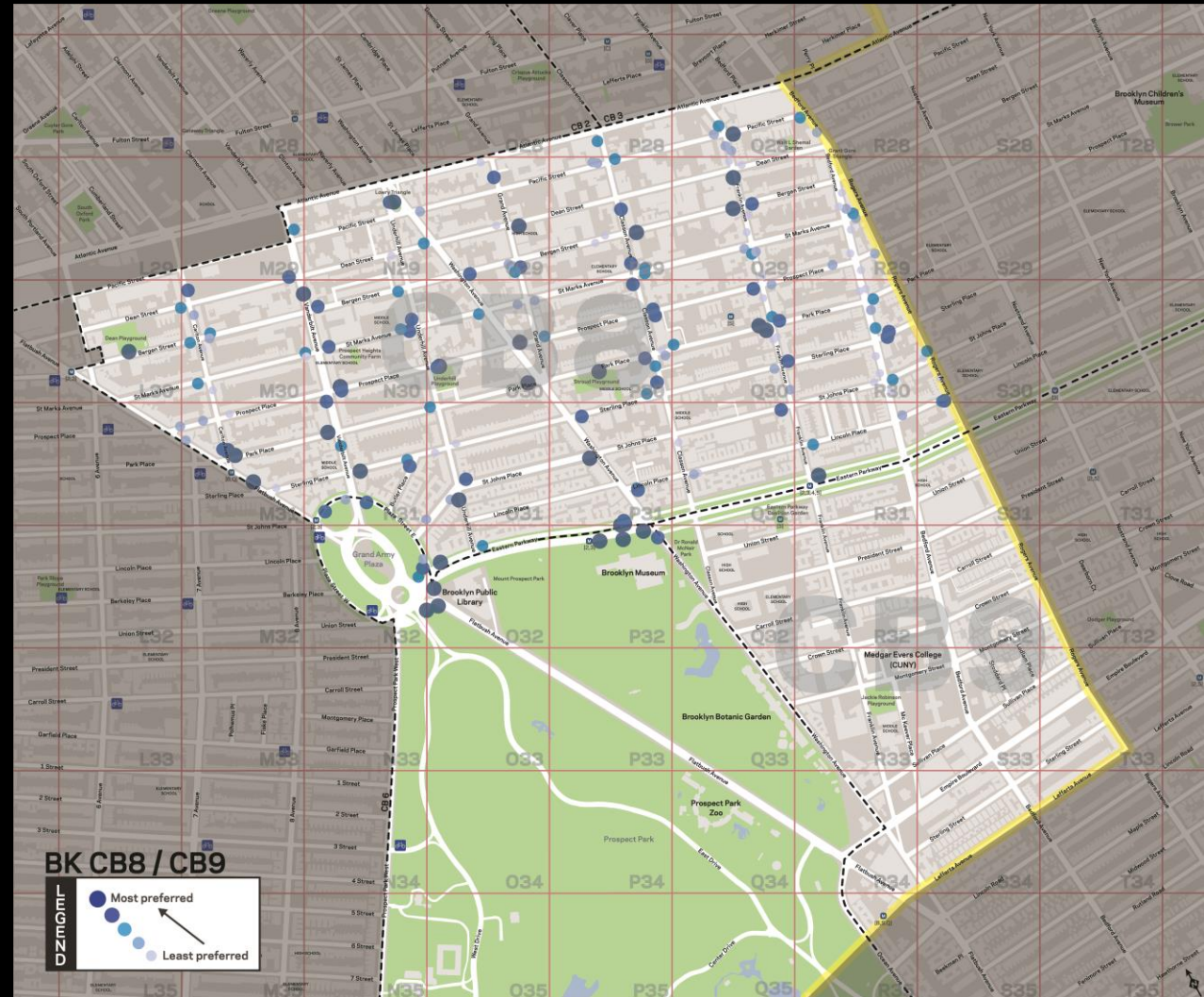
Creating a Plan

Potential sites are shown here by intensity of stakeholder preference

Darker shade indicates greater preference

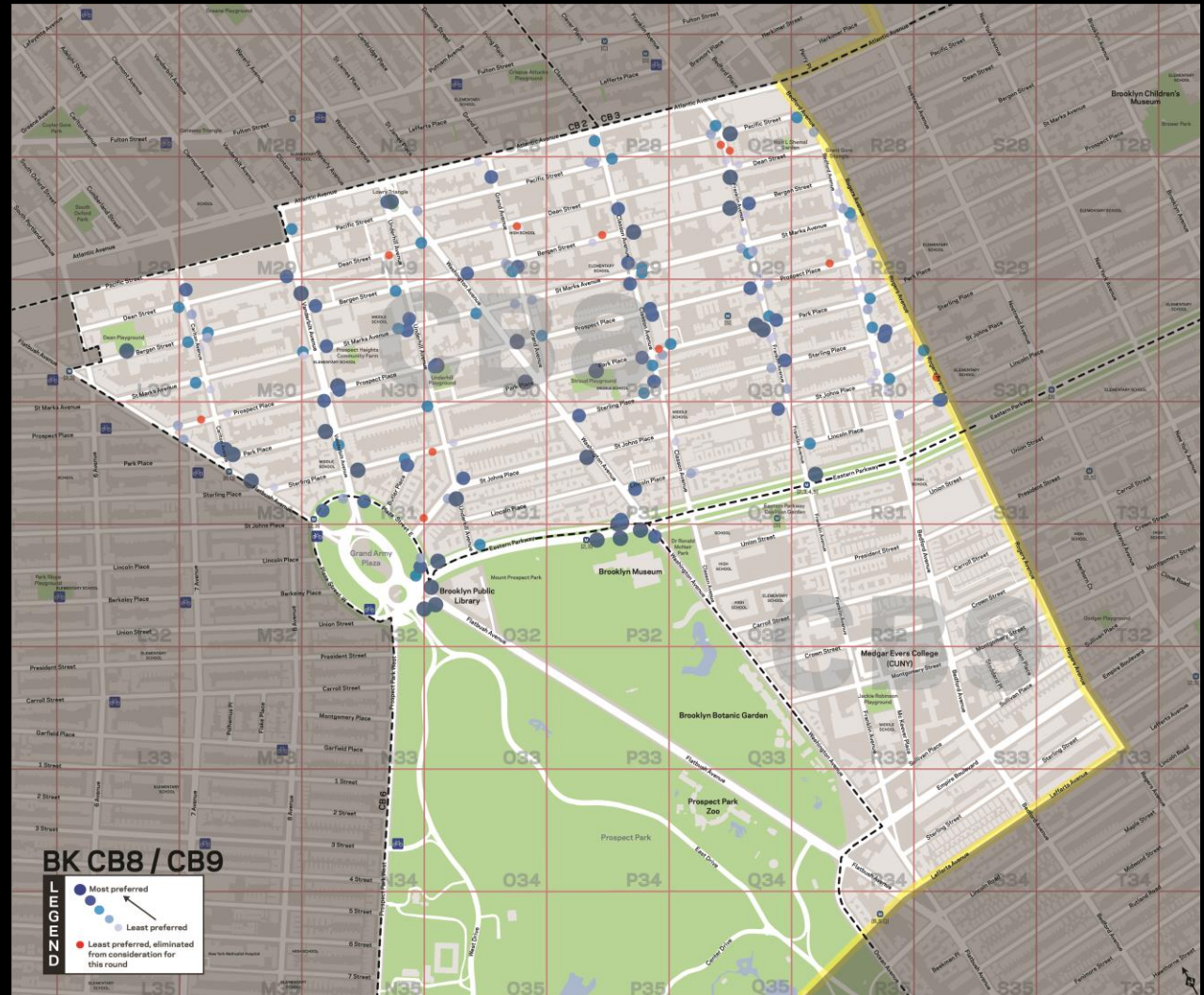
Inputs include:

- Community feedback
- Concentration of support clicks from public web portal
- Motivate operational considerations



Creating a Plan

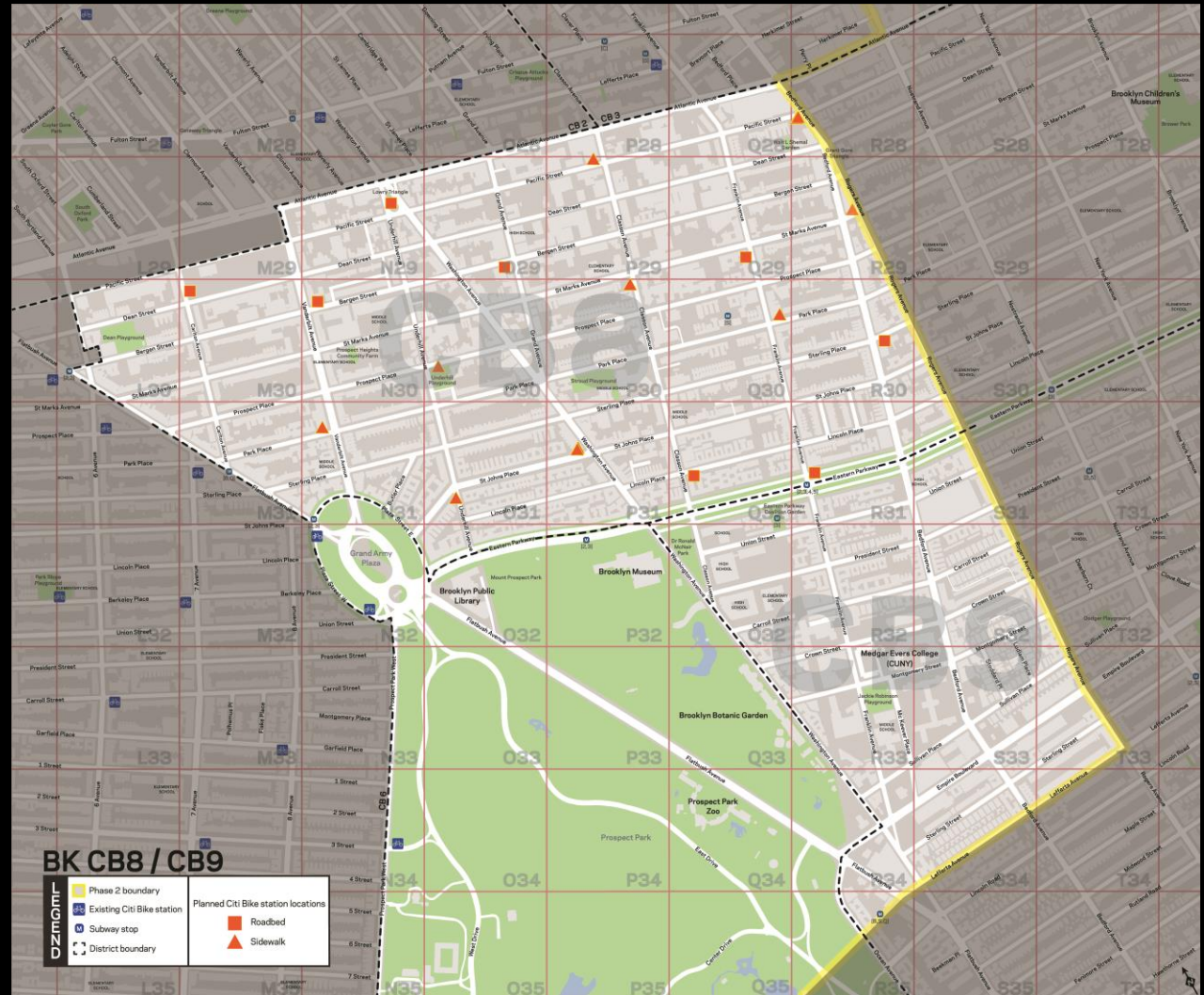
Where possible, less preferred sites were removed from consideration



Creating a Plan

Community preference
and network
considerations were
combined to create a
draft plan

17 sites needed for
CB 8 Draft Plan



Typical Station Locations

STATIONS IN ROADBED

Stations are typically located in the parking lane of the street, or on sidewalks that are wide enough to allow pedestrian flow

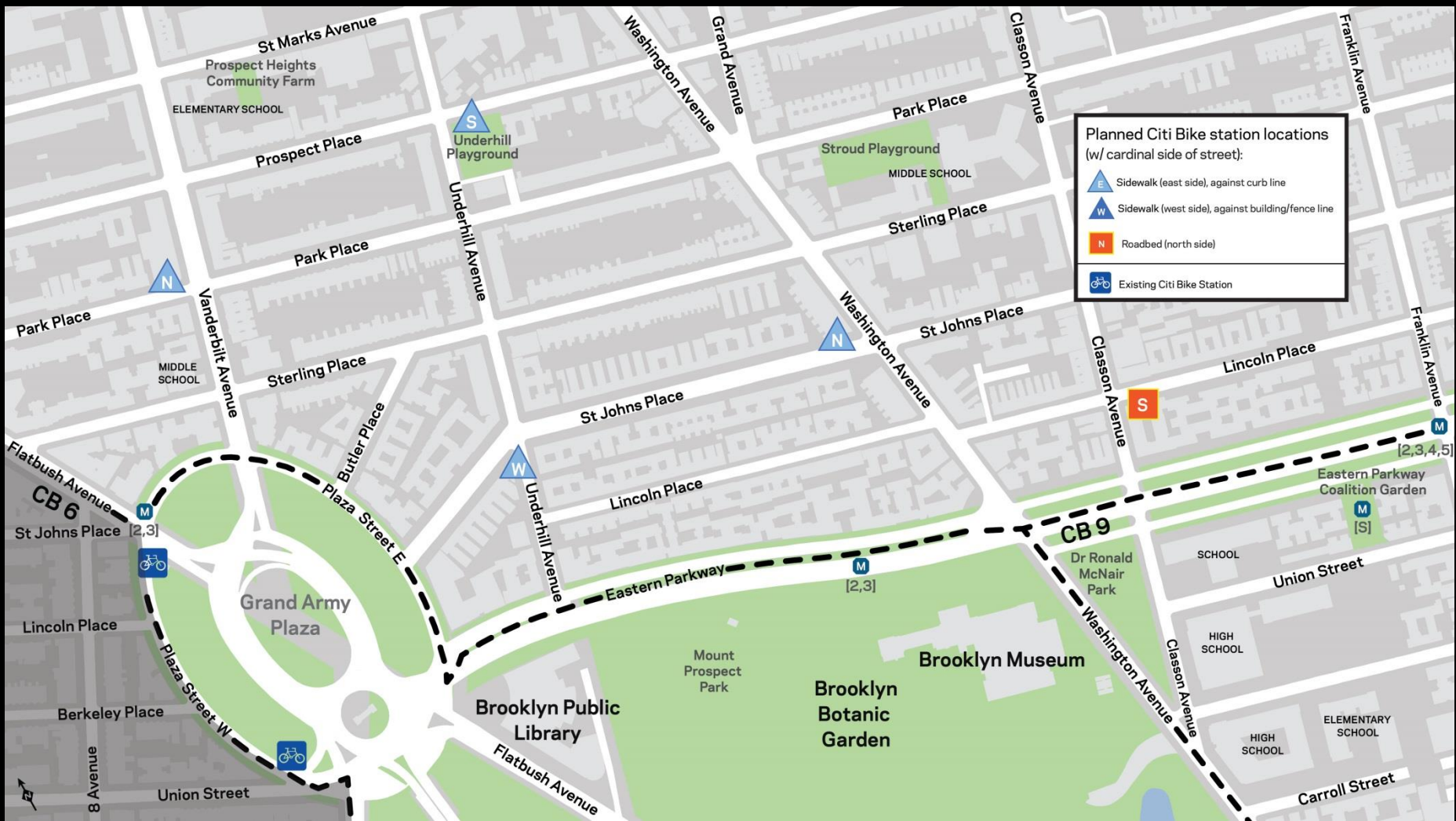


Typical Station Locations

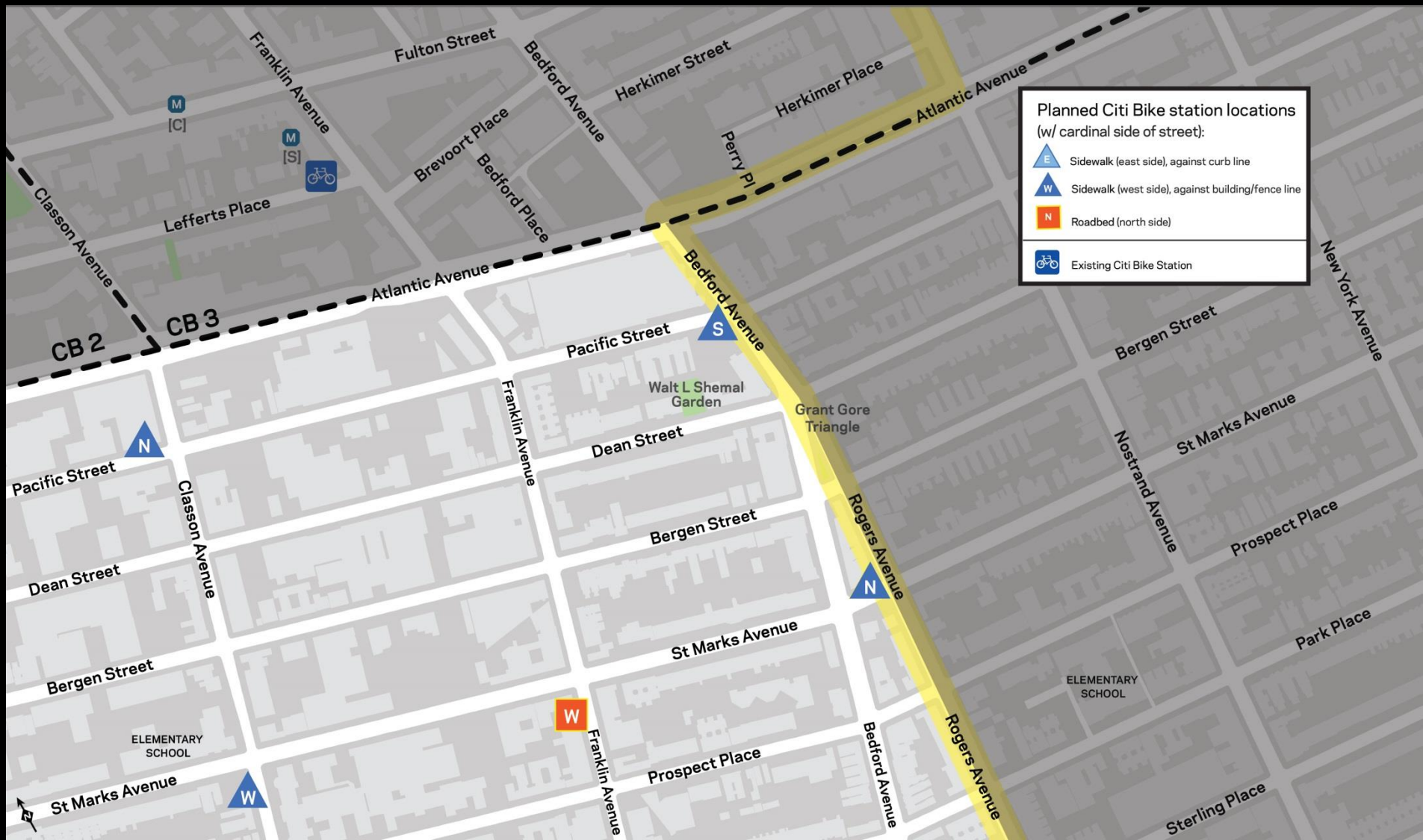
STATIONS ON SIDEWALK

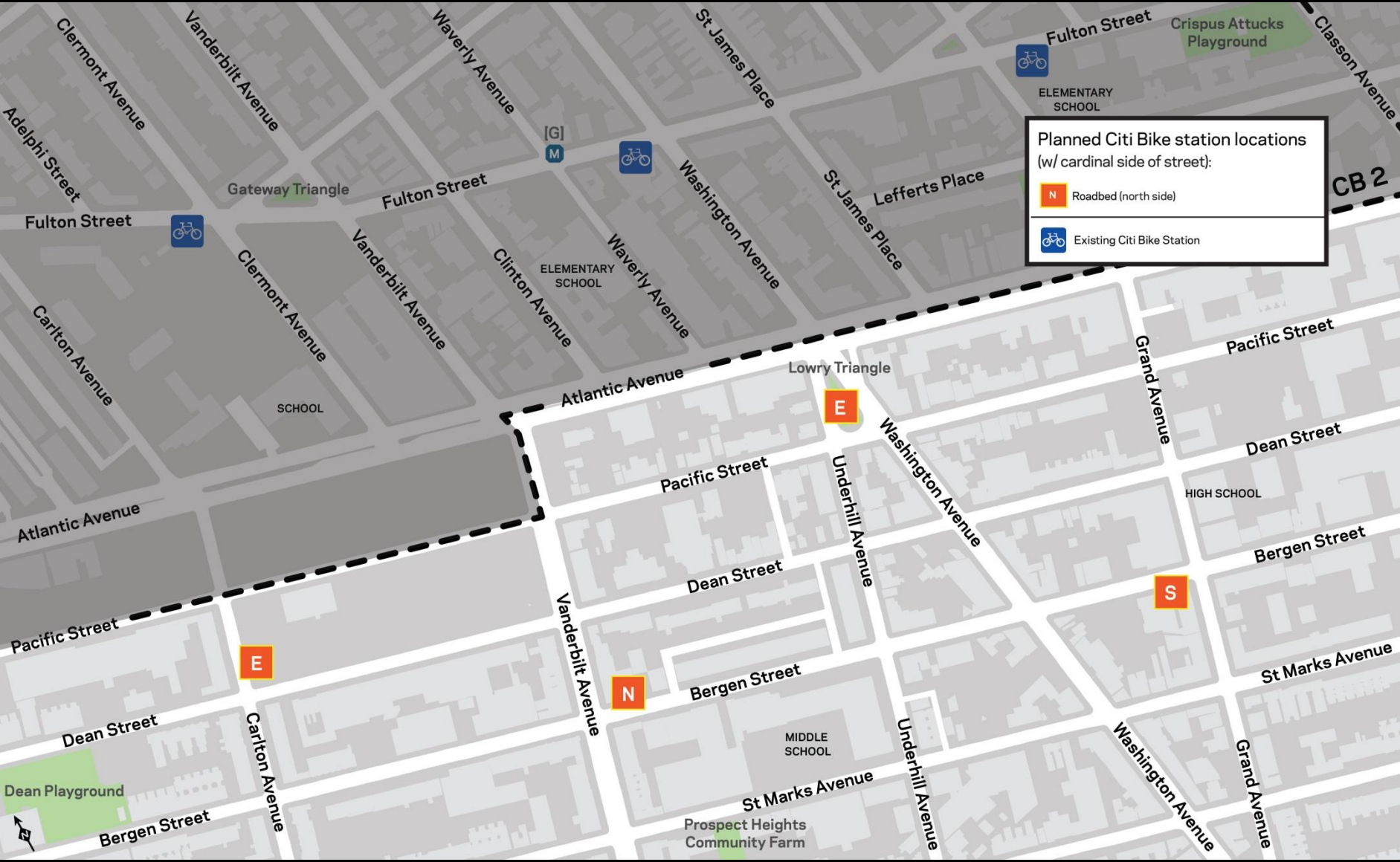
Stations are typically located in the parking lane of the street, or on sidewalks that are wide enough to allow pedestrian flow











Planned Citi Bike station locations
(w/ cardinal side of street):

 Roadbed (north side)

 Existing Citi Bike Station

Questions?

nyc.gov/bikeshare

www.citibikenyc.com

Thank
You

